

# World Class Innovation

...unleashing human potential

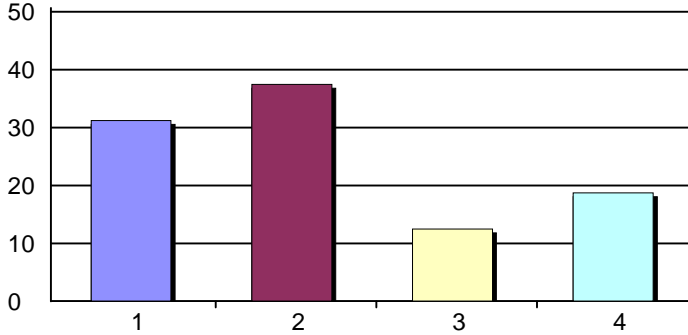
## The Next 25 Years

Creation Date: 12/3/2010

Time Interval: 11/21/2010 to 11/21/2010

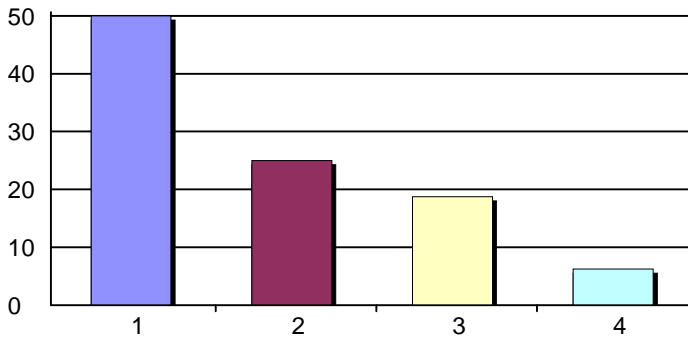
Total Respondents: 16

### 1. Five of the nine Supreme Court Justices are women.



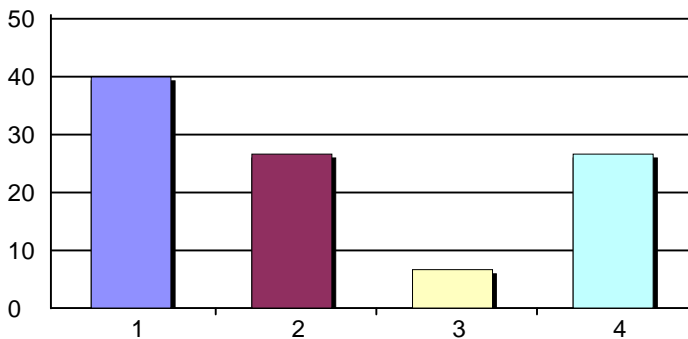
1. <20%	5	31%
2. 20-40%	6	38%
3. 41-60%	2	12%
4. >60%	3	19%
Total Responses:	16	
Mean: 2.19	Standard Deviation: 1.11	

### 2. Five new amendments to the U.S. Constitution are approved.



1. <20%	8	50%
2. 20-40%	4	25%
3. 41-60%	3	19%
4. >60%	1	6%
Total Responses:	16	
Mean: 1.81	Standard Deviation: 0.98	

### 3. The number of legal immigrants admitted per year is raised 5X.



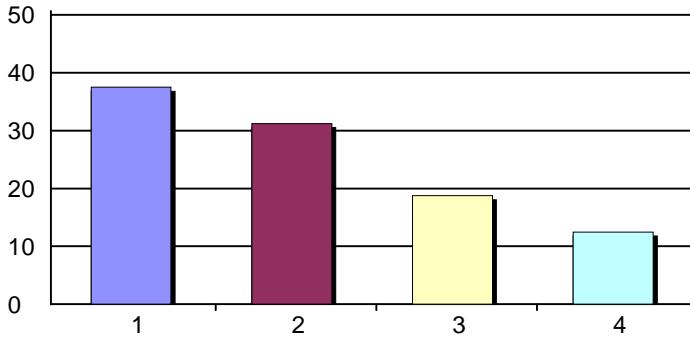
1. <20%	6	40%
2. 20-40%	4	27%
3. 41-60%	1	7%
4. >60%	4	27%
Total Responses:	15	
Mean: 2.20	Standard Deviation: 1.26	

# World Class Innovation

...unleashing human potential

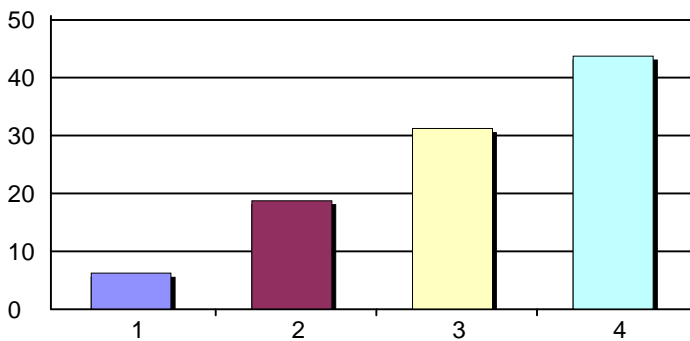
## The Next 25 Years

### 4. English is made the official U.S. language.



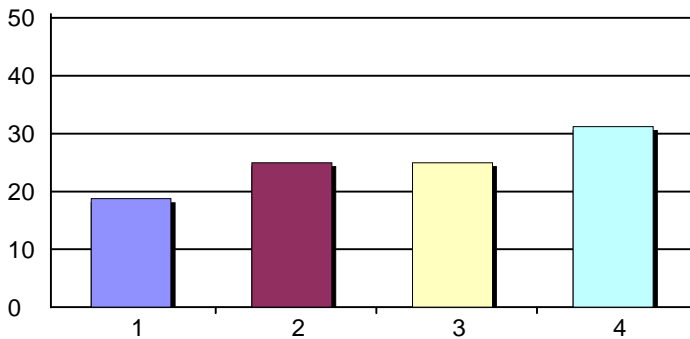
1. <20% 6 38%  
 2. 20-40% 5 31%  
 3. 41-60% 3 19%  
 4. >60% 2 12%  
 Total Responses: 16  
 Mean: 2.06 Standard Deviation: 1.06

### 5. Two years of college credit is possible in U.S. high schools.



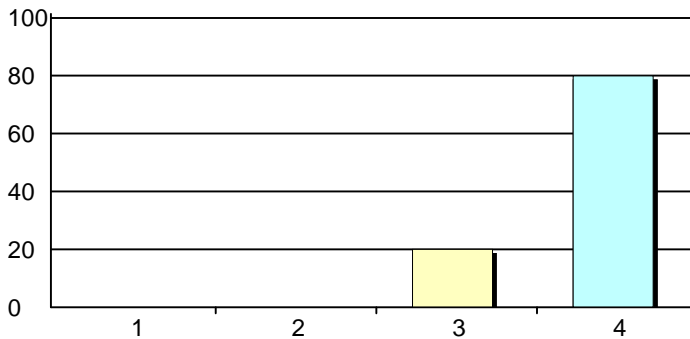
1. <20% 1 6%  
 2. 20-40% 3 19%  
 3. 41-60% 5 31%  
 4. >60% 7 44%  
 Total Responses: 16  
 Mean: 3.12 Standard Deviation: 0.96

### 6. U.S. K-12 school year is raised from 180 days to 230 days.



1. <20% 3 19%  
 2. 20-40% 4 25%  
 3. 41-60% 4 25%  
 4. >60% 5 31%  
 Total Responses: 16  
 Mean: 2.69 Standard Deviation: 1.14

### 7. Nanotechnology is a \$200 billion market worldwide.



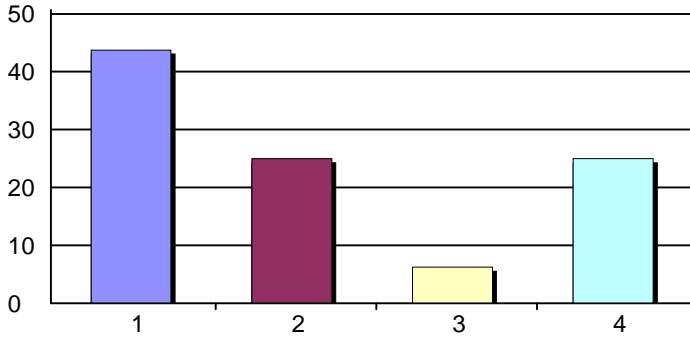
1. <20% 0 0%  
 2. 20-40% 0 0%  
 3. 41-60% 3 20%  
 4. >60% 12 80%  
 Total Responses: 15  
 Mean: 3.80 Standard Deviation: 0.41

# World Class Innovation

...unleashing human potential

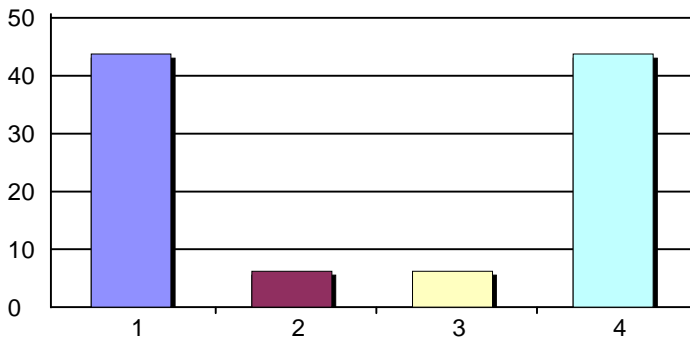
## The Next 25 Years

**8. 5% of new autos in U.S. travel 500 miles via GPS and computer, without a human driver, only human passengers.**



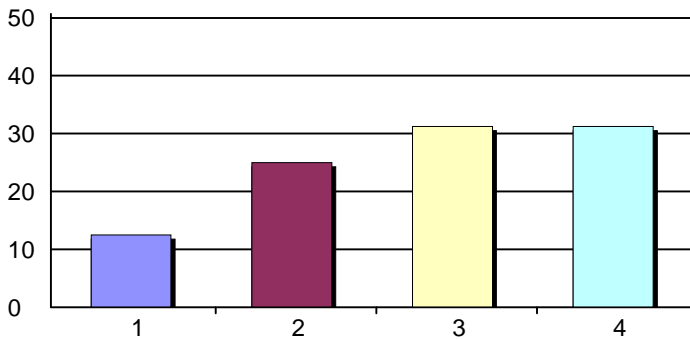
1. <20% 7 44%  
 2. 20-40% 4 25%  
 3. 41-60% 1 6%  
 4. >60% 4 25%  
 Total Responses: 16  
 Mean: 2.12 Standard Deviation: 1.26

**9. Over 20% of all U.S. electricity is from wind, solar or geothermal.**



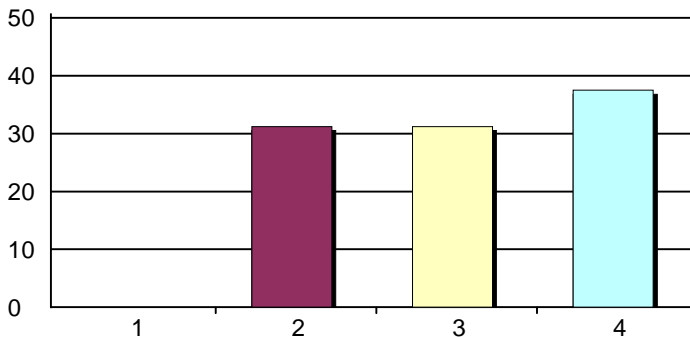
1. <20% 7 44%  
 2. 20-40% 1 6%  
 3. 41-60% 1 6%  
 4. >60% 7 44%  
 Total Responses: 16  
 Mean: 2.50 Standard Deviation: 1.46

**10. 25% of U.S. citizens carry a Biometric Personalized ID smart card.**



1. <20% 2 12%  
 2. 20-40% 4 25%  
 3. 41-60% 5 31%  
 4. >60% 5 31%  
 Total Responses: 16  
 Mean: 2.81 Standard Deviation: 1.05

**11. China has the world's largest GNP.**



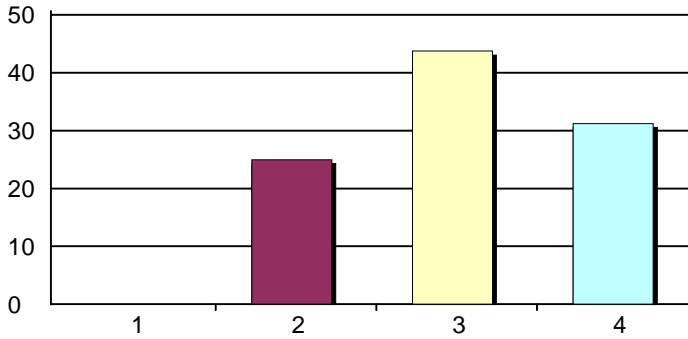
1. <20% 0 0%  
 2. 20-40% 5 31%  
 3. 41-60% 5 31%  
 4. >60% 6 38%  
 Total Responses: 16  
 Mean: 3.06 Standard Deviation: 0.85

# World Class Innovation

...unleashing human potential

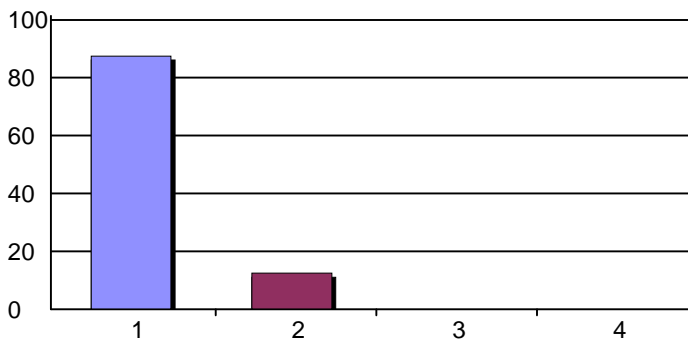
## The Next 25 Years

### 12. India has the world's second largest GNP.



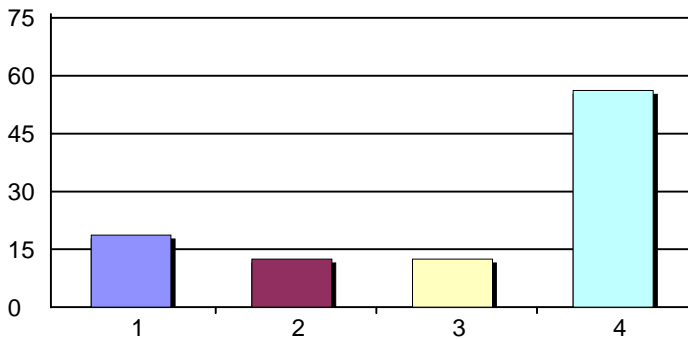
1. <20%	0	0%
2. 20-40%	4	25%
3. 41-60%	7	44%
4. >60%	5	31%
Total Responses:	16	
Mean: 3.06	Standard Deviation: 0.77	

### 13. U.S., Mexico, and Canada merge to become one country.



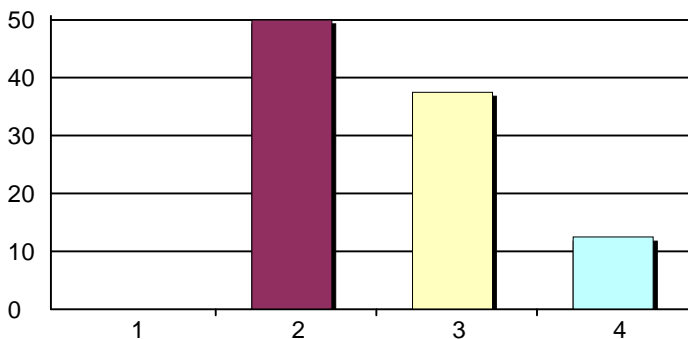
1. <20%	14	88%
2. 20-40%	2	12%
3. 41-60%	0	0%
4. >60%	0	0%
Total Responses:	16	
Mean: 1.12	Standard Deviation: 0.34	

### 14. U.S. dollar is 50% less valuable than in 2010.



1. <20%	3	19%
2. 20-40%	2	12%
3. 41-60%	2	12%
4. >60%	9	56%
Total Responses:	16	
Mean: 3.06	Standard Deviation: 1.24	

### 15. China remains the world's largest lending nation.



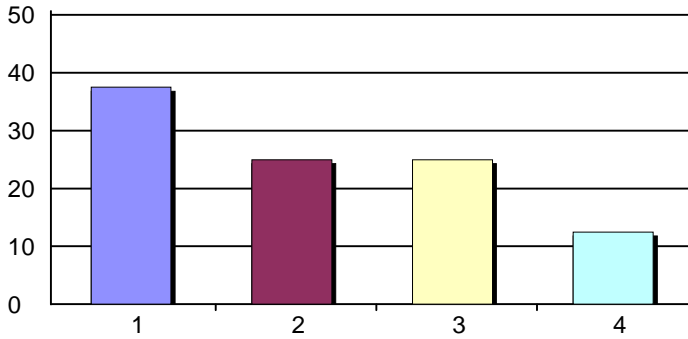
1. <20%	0	0%
2. 20-40%	8	50%
3. 41-60%	6	38%
4. >60%	2	12%
Total Responses:	16	
Mean: 2.62	Standard Deviation: 0.72	

# World Class Innovation

...unleashing human potential

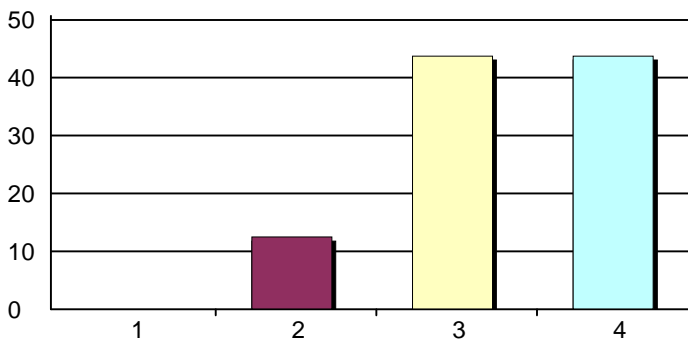
## The Next 25 Years

### 16. U.S. unemployment is in the range of 3-6%.



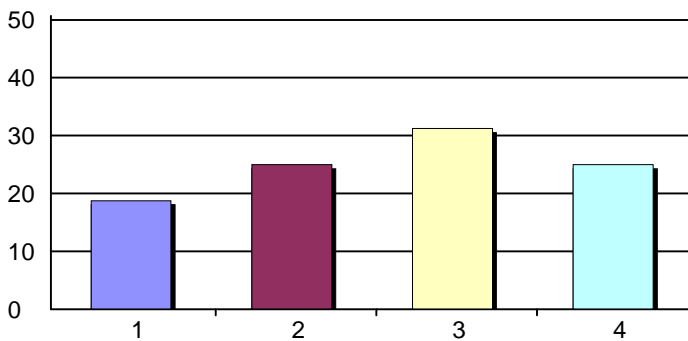
1. <20%	6	38%
2. 20-40%	4	25%
3. 41-60%	4	25%
4. >60%	2	12%
Total Responses:	16	
Mean: 2.12	Standard Deviation: 1.09	

### 17. Over 50% of all U.S. births are to unmarried mothers.



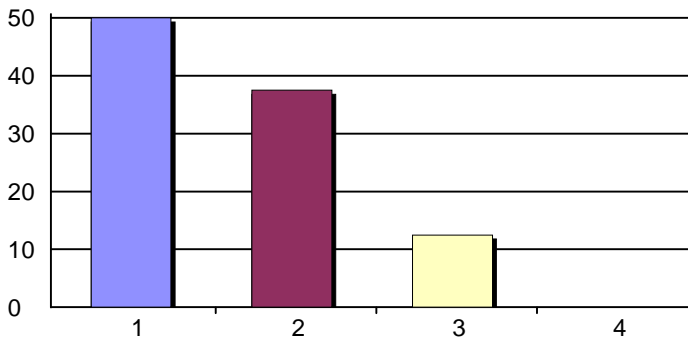
1. <20%	0	0%
2. 20-40%	2	12%
3. 41-60%	7	44%
4. >60%	7	44%
Total Responses:	16	
Mean: 3.31	Standard Deviation: 0.70	

### 18. 60% of all U.S. 2010 overseas military and support staff have been returned to U.S. bases. (No role of Policeman of the World)



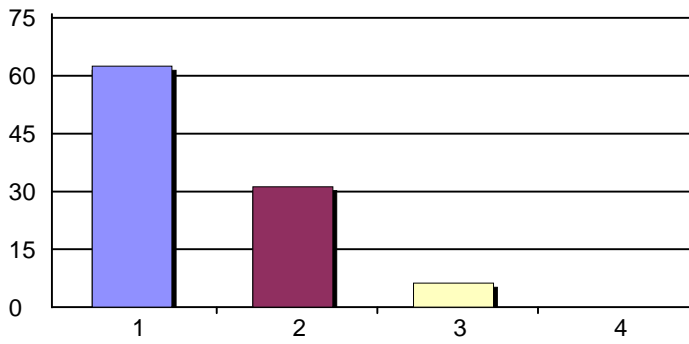
1. <20%	3	19%
2. 20-40%	4	25%
3. 41-60%	5	31%
4. >60%	4	25%
Total Responses:	16	
Mean: 2.62	Standard Deviation: 1.09	

### 19. U.S. has resigned from the United Nations.



1. <20%	8	50%
2. 20-40%	6	38%
3. 41-60%	2	12%
4. >60%	0	0%
Total Responses:	16	
Mean: 1.62	Standard Deviation: 0.72	

### 20. United Nations is discontinued.



1. <20%	10	62%
2. 20-40%	5	31%
3. 41-60%	1	6%
4. >60%	0	0%
Total Responses:	16	
Mean: 1.44	Standard Deviation: 0.63	